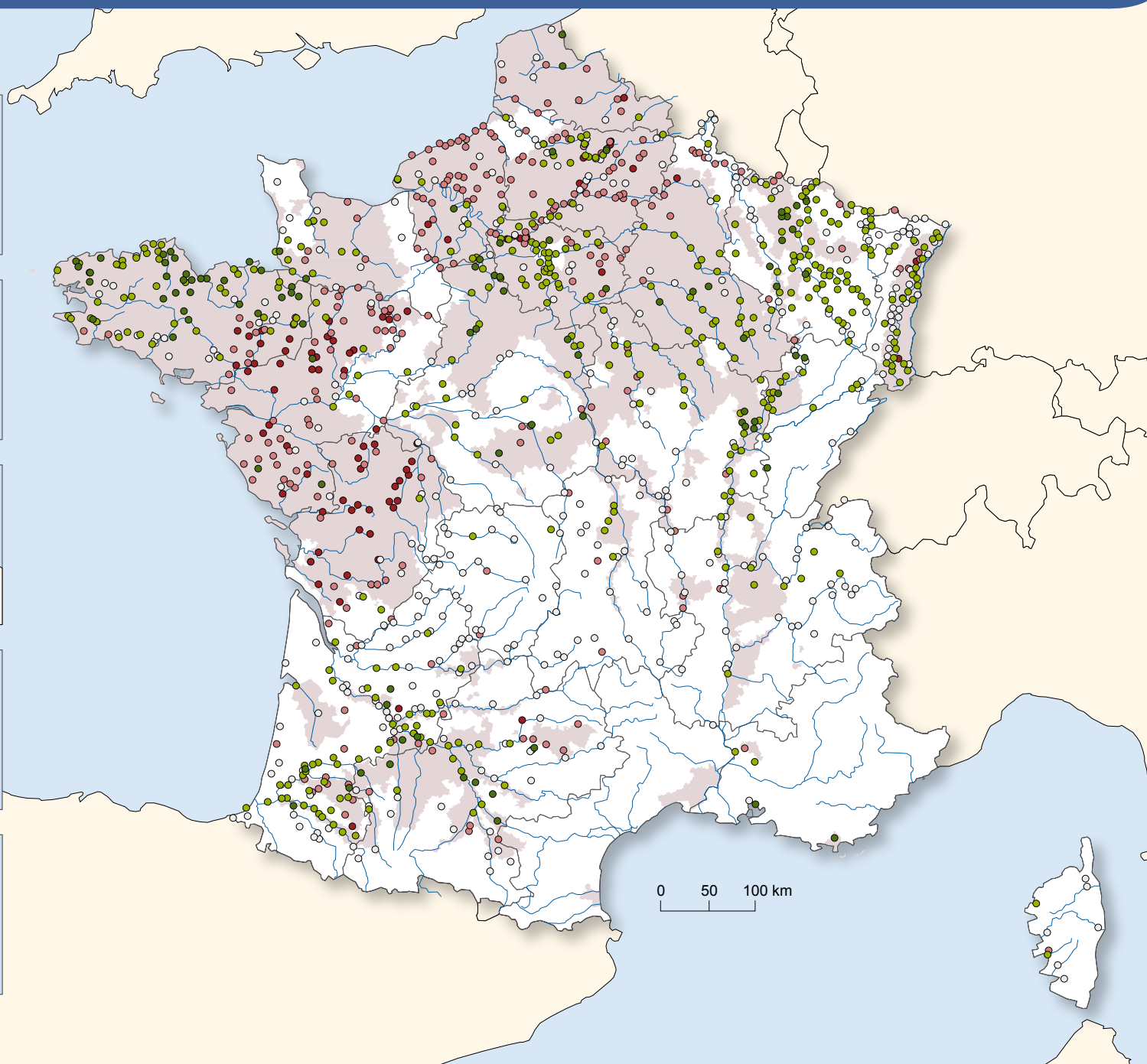
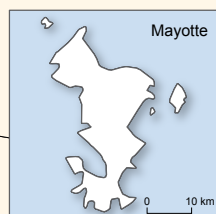
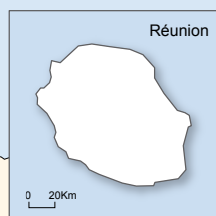
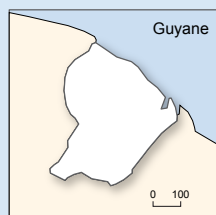
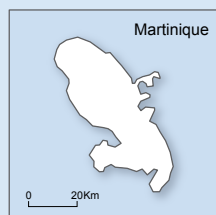
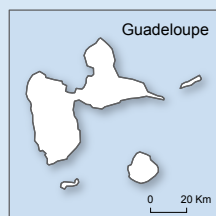


Evolution de la concentration moyenne en nitrates sur les stations en eau de surface entre 2004-2005 et 2010-2011



Evolution de la concentration moyenne

- Diminution forte ($x < -5$ mg/l)
 - Diminution faible ($-5 \leq x < -1$ mg/l)
 - Stabilité ($-1 \leq x \leq 1$ mg/l)
 - Augmentation faible ($1 < x \leq 5$ mg/l)
 - Augmentation forte (> 5 mg/l)
- Zone vulnérable (2007)
- Limite régionale